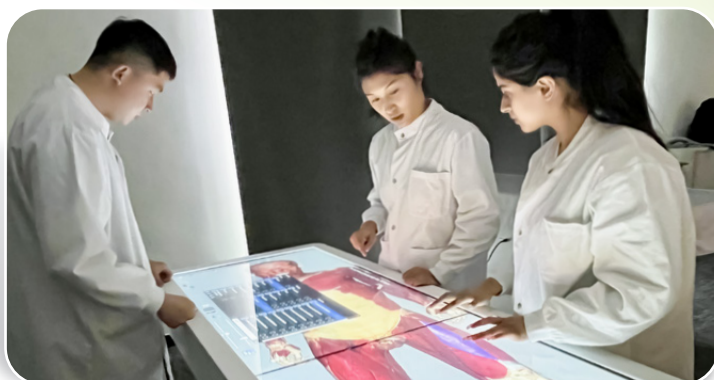


Bachelor of Science (Honours) in

Biomedical Science

生物醫學(榮譽)理學士

This programme aims to prepare students with firm scientific knowledge and technical expertise. It also provides a scientific foundation for students who intend to pursue postgraduate studies in professional medical and health disciplines such as medicine, dentistry, chiropractic, veterinary science, nursing, physiotherapy, etc.



Medium of Instruction	English
Total No. of Credits	120 credits
Years of Study	4 years



QF Level 5

QR registration no. 23/000112/5

Validity period 01/09/2023 to 31/08/2029

Senior Year Entry is available



Programme Objectives

- To provide students with an understanding of the concepts of biomedical science;
- To develop students' keen interest in science through critical, creative and problem-solving skills and provide insights into biological science areas;
- To produce graduates that are well equipped with the knowledge to pursue further postgraduate qualifications and/ or careers in biomedical and health science-related fields; and
- To enhance students' general and professional communication and interpersonal skills, understanding and appreciation of other cultures and environments.

Programme Features

- Experts and professionals from the Biomedical field provide guest lectures.
- Extensive laboratory training in cellular biology, biochemistry, molecular biology, genetics and immunology.
- Opportunities for academic visits to laboratories, industry and universities in other countries.

Career Prospects and Further Studies

- Students will be prepared as pre-professional graduates who can become eligible to enter medicine, dentistry, chiropractic, Chinese medicine and veterinary science in the region or overseas.
- Graduates may pursue postgraduate research degrees (MPhil and PhD) to enter academic careers as they will have the attributes of fundamental laboratory skills, an inquisitive mind and problem-solving skills.
- Graduates have sound grounding in science and technical aspects to undertake employment as Laboratory Assistants / Technicians, Research Assistants / Associates and Product Specialists for scientific equipment companies.

Programme-Specific Requirements

- Preference will be given to applicants who have obtained Level 2 or above in Integrated Science* or Combined Science*, Biology and/or Chemistry in HKDSE.

* Obtained before 2024 HKDSE.

Tuition Fee

Year	Tuition Fee (HK\$)			
	Full-time (without subsidy)	Full-time (with subsidy)	Senior Year Entry (without subsidy)	Senior Year Entry (with subsidy)
Year 1	105,050	69,930	105,050	69,930
Year 2	105,050	69,930	105,050	69,930
Year 3	105,050	69,930	N/A	N/A
Year 4	105,050	69,930	N/A	N/A
Programme Total	420,200	279,720	210,100	139,860

- Tung Wah College will adjust the tuition fee of its programmes based on the Composite Consumer Price Index to be announced by the Government annually.
- Tuition fees are normally charged by two instalments per annum and are payable before the commencement of each semester. New students are required to settle the balance of the tuition fee for the first semester (i.e. after deducting deposit) upon programme registration in August.
- Students are required to pay additional fees for all retake/additional courses which would be charged at the rate of the normal cohort and be calculated by the number of credits to be taken. Please refer the details in the College's Fees Regulation at https://www.twc.edu.hk/en/Administration_Units/fo/our_service/student-area.
- This represents the programme fee after deduction of subsidy under the Non-meanstested Subsidy Scheme for Self-financing Undergraduate Studies in Hong Kong (NMTSS). For annual subsidy amount, please refer to <https://www.cspe.edu.hk/en/nmt/>.
- All fees paid are non-refundable and non-transferable.

Admission Requirements

For Year 1 entry to degree programmes, applicants should meet one of the following requirements:

- Starting from 2024, the renamed Liberal Studies subject, which is now known as Citizenship and Social Development, of the Hong Kong Diploma of Secondary Education Examination (HKDSE) will be changed from being graded in five levels to being marked as "Attained" and "Not Attained". In this connection, the College has decided the general admission requirements for Bachelor's degree programmes (First Year Entry) will be adjusted as follows from 2024/25 Entry onwards:

HKDSE Subjects	Core Subjects				Elective Subject / Applied Learning
	Chinese Language ⁽¹⁾	English Language ⁽²⁾	Mathematics (Compulsory Part)	Citizenship and Social Development ⁽³⁾	Elective ⁽⁴⁾
General Entrance Requirements	Level 3	Level 3	Level 2	Attained	Level 2

; OR

- Have passes in AS Use of English and AS Chinese Language and Culture plus one AL subject/two AS subjects in HKALE and Level 2 for Chinese Language and English Language plus passes in three other subjects in HKCEE; OR
- Have obtained the International Baccalaureate (IB) Diploma with a minimum score of 24 and fulfilled the English language requirements:
 - English A: Language and Literature (Higher or Standard Level) – Grade 4; or
 - English A: Literature (Higher or Standard Level) – Grade 4; or
 - English B (Higher Level) – Grade 4; or
 - English B (Standard Level) – Grade 5; or
 - English Literature and Performance (Standard Level) – Grade 4; or
 - English Text and Performance (Standard Level) – Grade 4; OR
- Have met the 2nd cut-off line⁽⁵⁾ of the respective province for admission to mainland key universities in the National College Entrance Examination (Gaokao) / Joint Entrance Examination for Universities in PRC (JEE, PRC) and the scores of English Language is over 100 (全國普通高等學校招生入學考試(內地高考)/港澳台僑聯招試達到所屬省市報讀第二批重點大校分數線⁽⁵⁾以上及英語科達100分或以上); OR
- Have obtained equivalent qualifications (such as meeting the admission requirements of a degree programme offered outside Hong Kong).

For senior year entry⁽⁶⁾, applicants should meet one of the following requirements:

- Have completed an Associate Degree Programme (AD) or Higher Diploma Programme (HD) of the relevant subject/discipline; OR
- Have obtained equivalent qualifications.

Students admitted to the Senior Year may be required to satisfactorily complete some bridging courses. The bridging courses can be Discipline courses or General Education courses offered in the first two years of the curriculum.

- Notes (1) For non-Chinese-speaking learners, alternative Chinese Language qualifications will be accepted for students who have met the specified conditions: (a) students who have learned Chinese Language for less than 6 years while receiving primary and secondary education; (b) students who have learned Chinese Language for 6 years or more in schools, but have been taught an adapted and simpler Chinese Language curriculum not normally applicable to the majority of students in local schools. AP L Chinese (for non-Chinese speaking students) should, in general, be accepted as an alternative Chinese Language qualification, among other acceptable alternative Chinese Language qualifications.
- (2) Students with HKDSE English Language results at Level 3 or below are required to complete non-credit bearing English enhancement course(s) in the first year of study.
- (3) The past result of Liberal Studies (Level 2 or above) will be considered as "Attained" in Citizenship and Social Development.
- (4) Level 2 in Mathematics Extended Part (Module 1 or Module 2) is also recognised as one of the five HKDSE subjects in fulfilling the minimum entrance requirement.
- (5) Or the "cut-off line for undergraduate studies" (for provinces and cities where the 1st and 2nd cut-off lines are combined) 或「本科批次」分數線 (適用於「本科一批」及「本科二批」合併為「本科批次」的省市)
- (6) A student may enter the programme with advanced standing and be exempted from taking certain course(s) if his/her previous qualifications are recognised by the College, for the list of Programmes being recognised, please refer to: https://www.twc.edu.hk/en/twc/sye_advancedstanding.

Contact Information

Tel: (852) 3190 6672 | Email: applytwc@twc.edu.hk | Website: www.twc.edu.hk

